

Universal Timer/Counter

Order Code : PC13-201

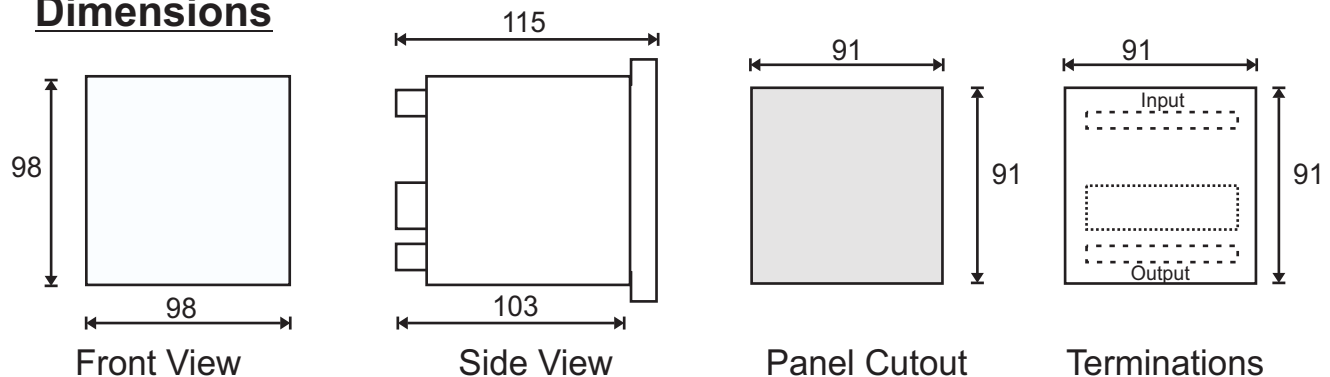
Universal Timer/Counter is intended to be used in machines requiring multiple no. of timers & counters.

The Inputs, Outputs, Timers & Counters can be integrated to each other by the user through parameter settings.

General Specifications:

| | |
|---|---|
| No of Inputs | 8 |
| No of Outputs | 5 |
| No of Timers | 5 |
| No of Counters | 8 |
| Password | 1234 (Default) |
| Timer - Range | 0.01 to 650 sec |
| Counter - Range | 0 to 65000 Counts |
| Inputs | 8-15VDC, 5mA |
| Outputs | Relay :Sunhold/ Lion or equivalent, Sugar-cube Contact rating : 230VAC/24VDC @ 5Amp |
| Input Indication | Red LED |
| Output Indication | Red LED |
| Termination | Screw type, suitable For 1.5 mm sq wire |
| Display | 16x2 LCD with backlit |
| Keys | 5 Navigation + 2 Soft + 2 Function Keys |
| Internal power supply sourcing capacity for external elements | 12VDC : Up to 0.5 Amp |
| Aux Supply | 90-270 VAC/DC, 1 Amp max |

Dimensions



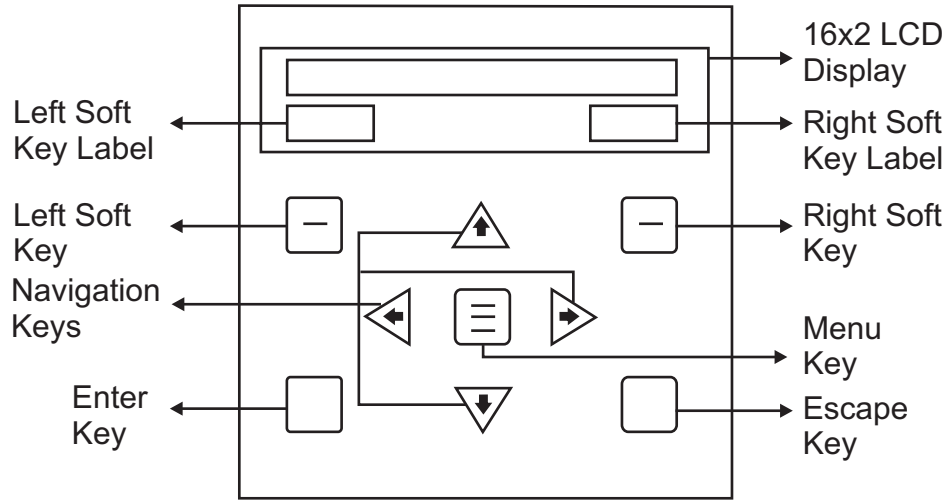
(All dimension are in mm)

Due to continuous development, the details are subject to change without prior notice

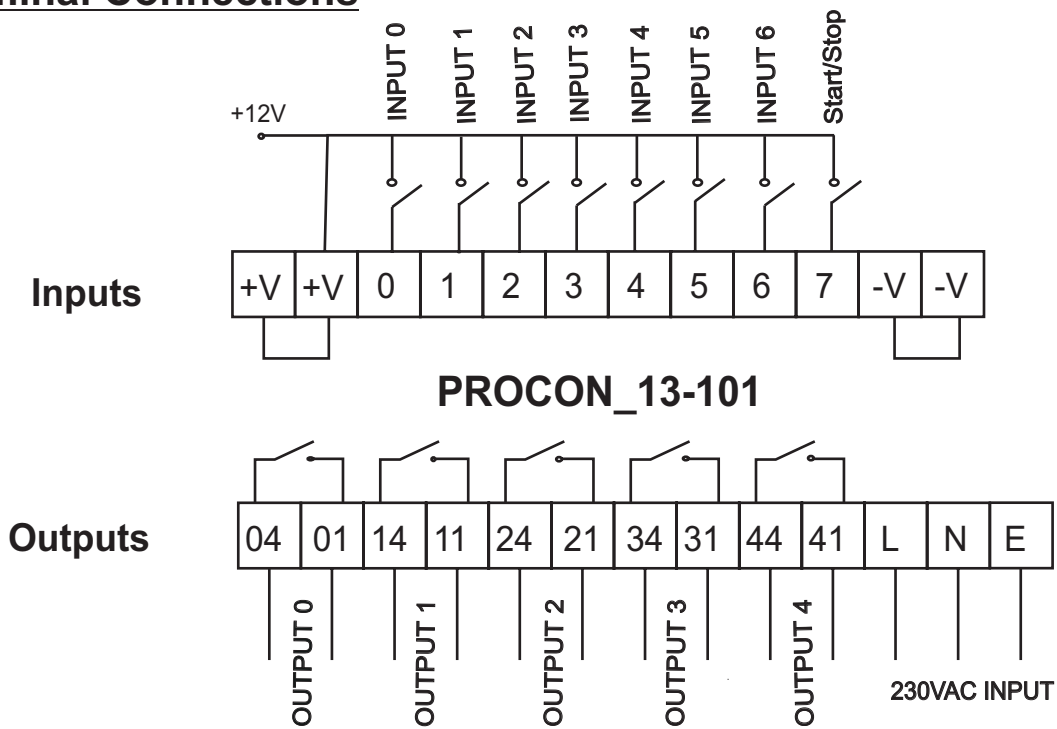
Peripherals for Industrial Automation

SHAVISON

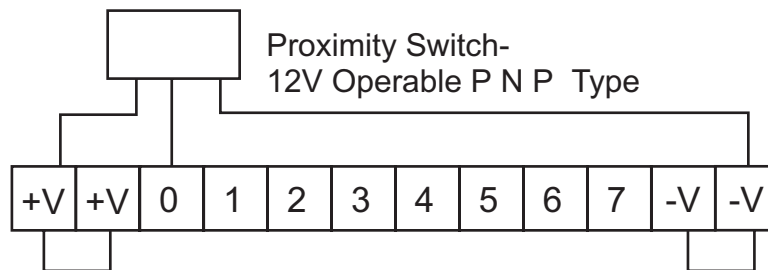
Overview of control keys



Terminal Connections

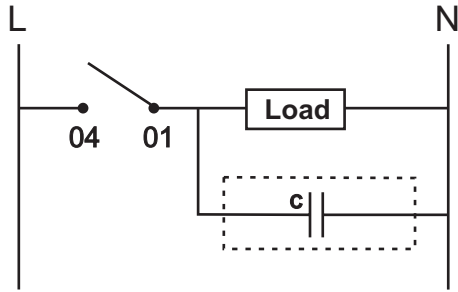


Typical Connections For Proximity Switch



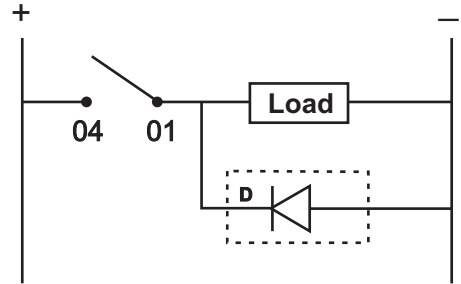
Typical Connections for Load

For 230V AC



| | |
|-----------|--------------------------|
| Capacitor | 0.1uF, 275VAC Typical |
|-----------|--------------------------|

For 24V DC



| Load Current | Diode |
|--------------|--------|
| 6A | 6A4 |
| 3A | 1N5402 |
| 1A | 1N4007 |

Self Test procedure

Press and hold both left ◀ & right ▶ key simultaneously for 1 Second.
 Display will show diagnostic text on the screen.
 Press the upper left soft key to get into self diagnostic mode.

Input Section:

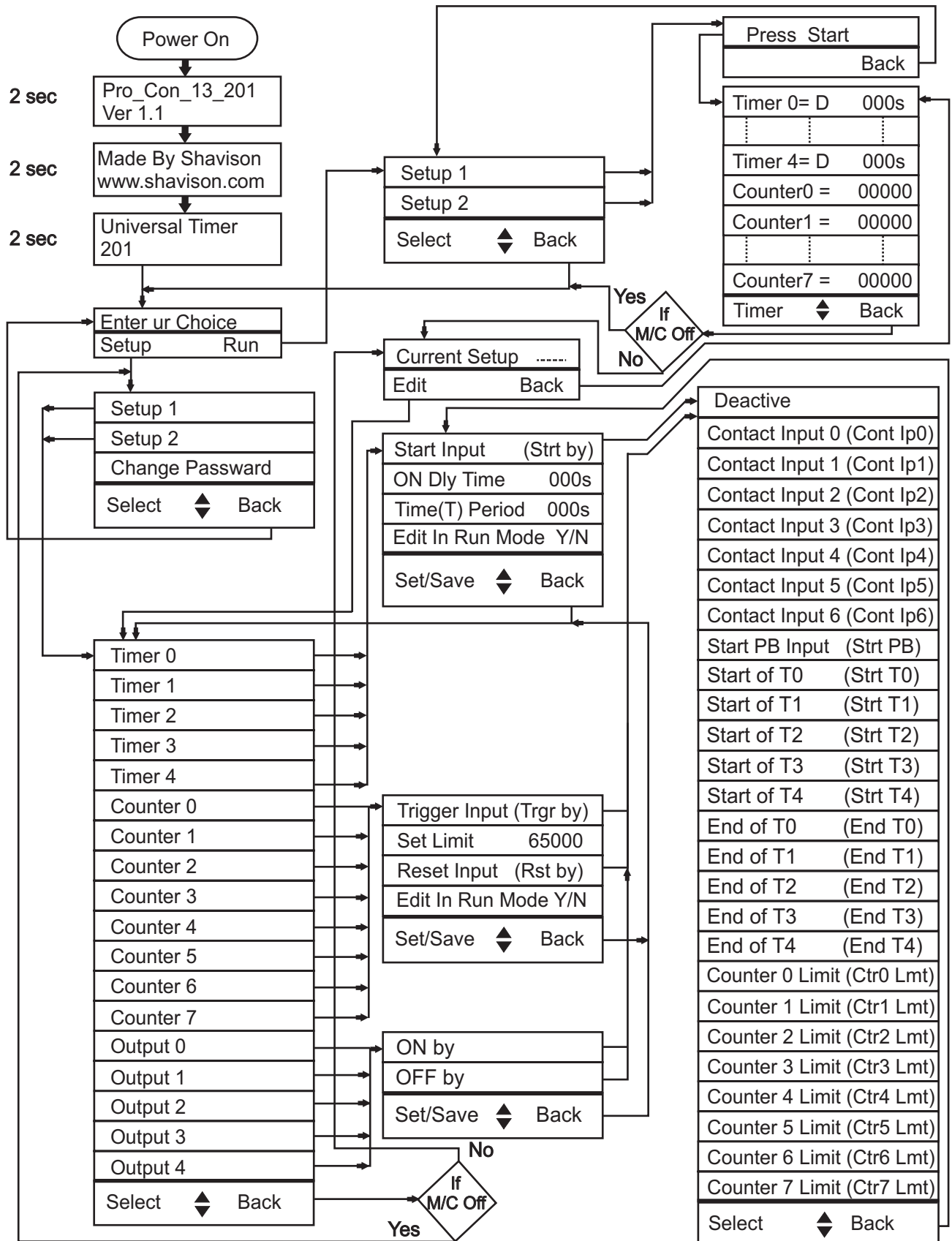
Connect +Ve terminal to input terminal one by one.
 Corresponding Input LED will glow and display will show the corresponding input and output number as shown below.

| INPUT APPLIED AT TERMINAL NO | DISPLAY | |
|------------------------------|---------|--------|
| | INPUT | OUTPUT |
| 0 | 0 | 1 |
| 1 | 1 | 2 |
| 2 | 2 | 3 |
| 3 | 3 | 4 |
| 4 | 4 | 5 |
| 5 | 5 | 0 |
| 6 | 6 | 0 |
| 7 | 7 | 0 |

Output Section:

Press Green button repeatedly.
 Corresponding Output LED will glow one by one.

Screen Architecture / Operation



Note : Values in () shows text on LCD screen

Peripherals for Industrial Automation

