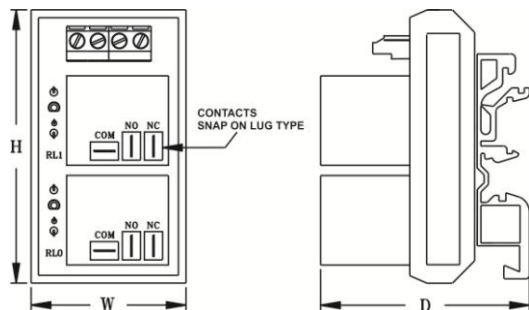
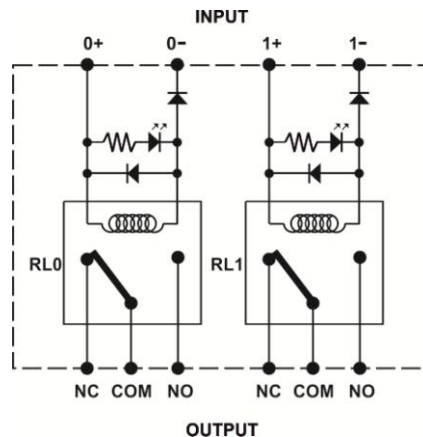


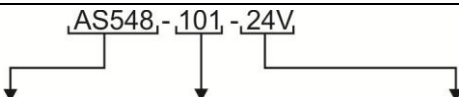
1 C/O Relay Module With 30A Contacts



Dimensions



Schematic

FEATURES	LED & Free wheeling diode across coil. Reverse Polarity blocking diode. Contacts rated for 30A.				
CONTACT CONFIGURATION	1C/O				
NO. OF CHANNELS	1, 2				
RELAY	NOMINAL COIL VOLTAGE	12VDC	24VDC		
	MUST OPERATE VOLTAGE	10.3VDC	19.9VDC		
	MUST RELEASE VOLTAGE	3.1VDC	5.5VDC		
	MAX. COIL VOLTAGE	13.2 VDC	26.4VDC		
	COIL CURRENT PER CHANNEL ⁽¹⁾	90mA	45mA		
	OPERATE (SET) TIME	15ms max.			
	RELEASE (RESET) TIME	20ms max.			
	ENDURANCE	Electrical : 100,000 operations min. (at 1,800 operations/hr)			
	MAX. OPERATING FREQUENCY	Mechanical : 18,000 operations/hr Electrical : 1,800 operations/hr			
DIELECTRIC STRENGTH	1. Coil to coil : 100VAC , 50/60 Hz for 1 minute 2. Coil to contact : 1.5KVAC , 50/60 Hz for 1 minute 3. Contacts of same polarity : 1KVAC , 50/60 Hz for 1 minute 4. Contacts - channel to channel : 1.5KVC, 50/60 Hz for 1 minute				
CONTACT RATING	30A@28VDC/230VAC				
OPERATING AMBIENT	0-55°C, 85% RH				
STORAGE AMBIENT	-20°C to 85°C				
TERMINATIONS	COIL TERMINATION	Screw type, for 1.5mm sq. wire			
	CONTACT TERMINATION	Snap on Lug type, 6.3mm			
MOUNTING	35 mm DIN rail				
ORDERING INFORMATION	<div>AS548, -101, -24V</div> <div></div>				
	DESIGN NO.	NO. OF RELAYS	COIL VOLTAGE	DIMENSIONS W x H x D (mm)	WEIGHT (MAX)
	AS548	101 : 1 102 : 2	12V : 12VDC 24V : 24VDC	48 x 80 x 65	90 grams
					120 grams
Note : 1. Current including LED current.					