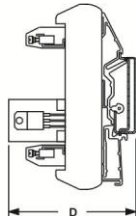
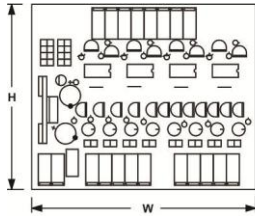
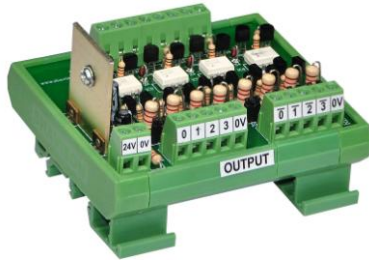
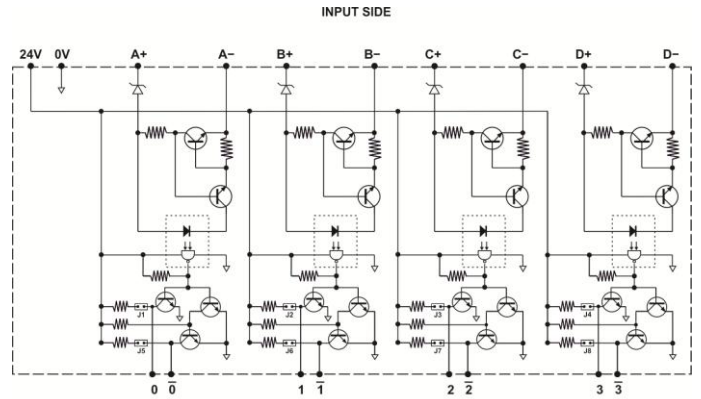


HIGH SPEED OPTO INTERFACE MODULE



Dimensions

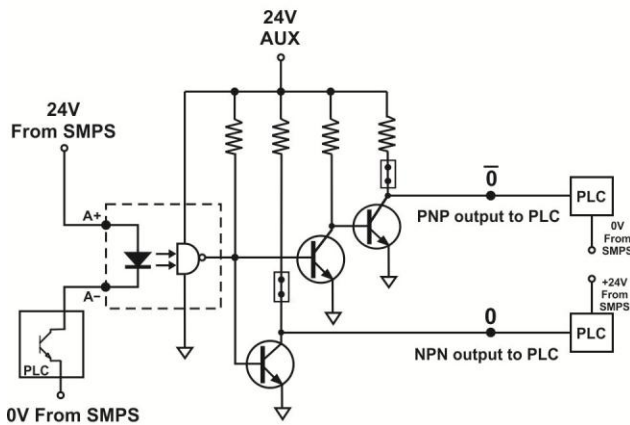


OUTPUT SIDE

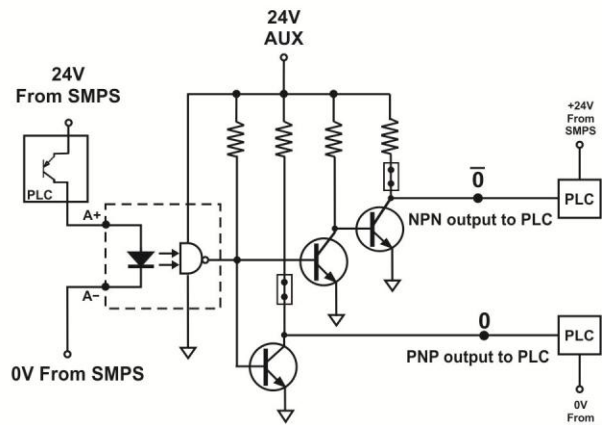
Schematic

Note : Default jumper setting is 24V output.
When jumpers are removed open collector output is available on terminals.

TYPICAL CONNECTIONS : FOR PLC APPLICATION



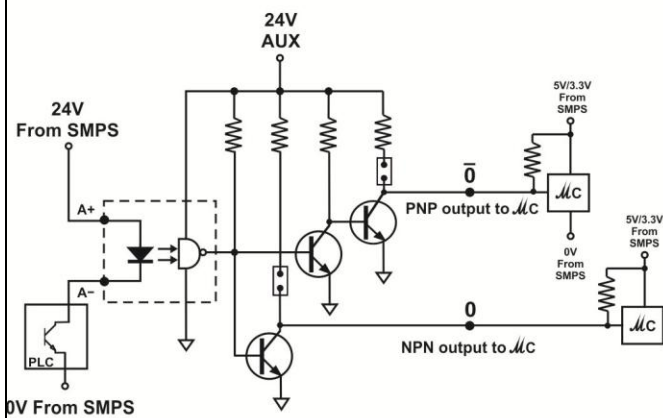
NPN INPUT



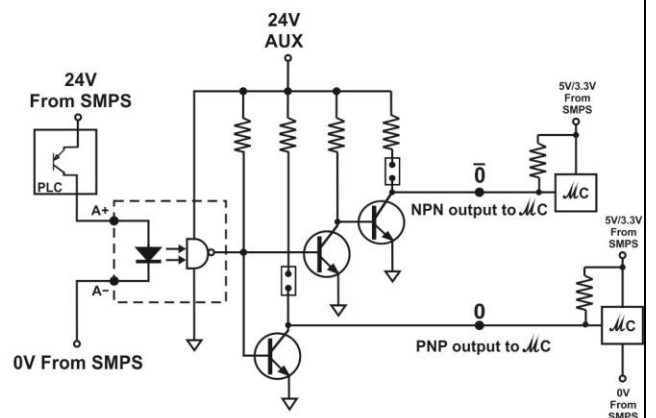
PNP INPUT

Keep jumpers J1-J8 (J1-J4 non inverted output & J5-J8 inverted output) short for 24V output.

TYPICAL CONNECTIONS : FOR MICROCONTROLLER APPLICATION



NPN INPUT



PNP INPUT

Keep jumpers J1-J8 (J1-J4 non inverted output & J5-J8 inverted output) open for open collector output.

FEATURES	<ul style="list-style-type: none">• Optical Isolation between Input & Output• Low input current• Wide input voltage range• High speed operation at 200KHz• 24V output or open collector output selectable through jumpers.					
NO. OF CHANNELS	4					
AUXILIARY SUPPLY	24V / 80mA					
INPUT	INPUT VOLTAGE	3V to 12V		12V to 30V		
	INPUT CURRENT PER CHANNEL	< 15mA				
	MAX. OPERATING FREQUENCY	200KHz				
OUTPUT	RATING	24V /10mA (Jumpers short)		3.3V-30V / 30mA (Open Collector)		
DIELECTRIC STRENGTH	1. Inputs - channel to channel (when isolated) : 100VAC, 50/60 Hz for 1 minute 2. Input to Output : Optical - 500VAC, 50/60 Hz for 1 minute 3. Outputs - channel to channel (when isolated) : 100VAC, 50/60 Hz for 1 minute					
OPERATING AMBIENT	0~55°C, 85% RH					
STORAGE AMBIENT	-20°C to 85°C					
TERMINATIONS	INPUT SIDE	Screw type, for 2.5mm sq. wire				
	OUTPUT SIDE	Screw type, for 2.5mm sq. wire				
MOUNTING	35 mm DIN rail					
ORDERING INFORMATION	<div>AS923 - 1XX</div> <div><div></div><div></div></div>					
	NO. OF CHANNELS	DESIGN NO.	INPUT VOLTAGE	OUTPUT VOLTAGE	DIMENSIONS W x H x D (mm)	WEIGHT (MAX)
	4	AS923	101 : 3V ~ 12V 102 : 12V ~ 30V	24V DC (10mA)	92 x 80 x 70	123 grams